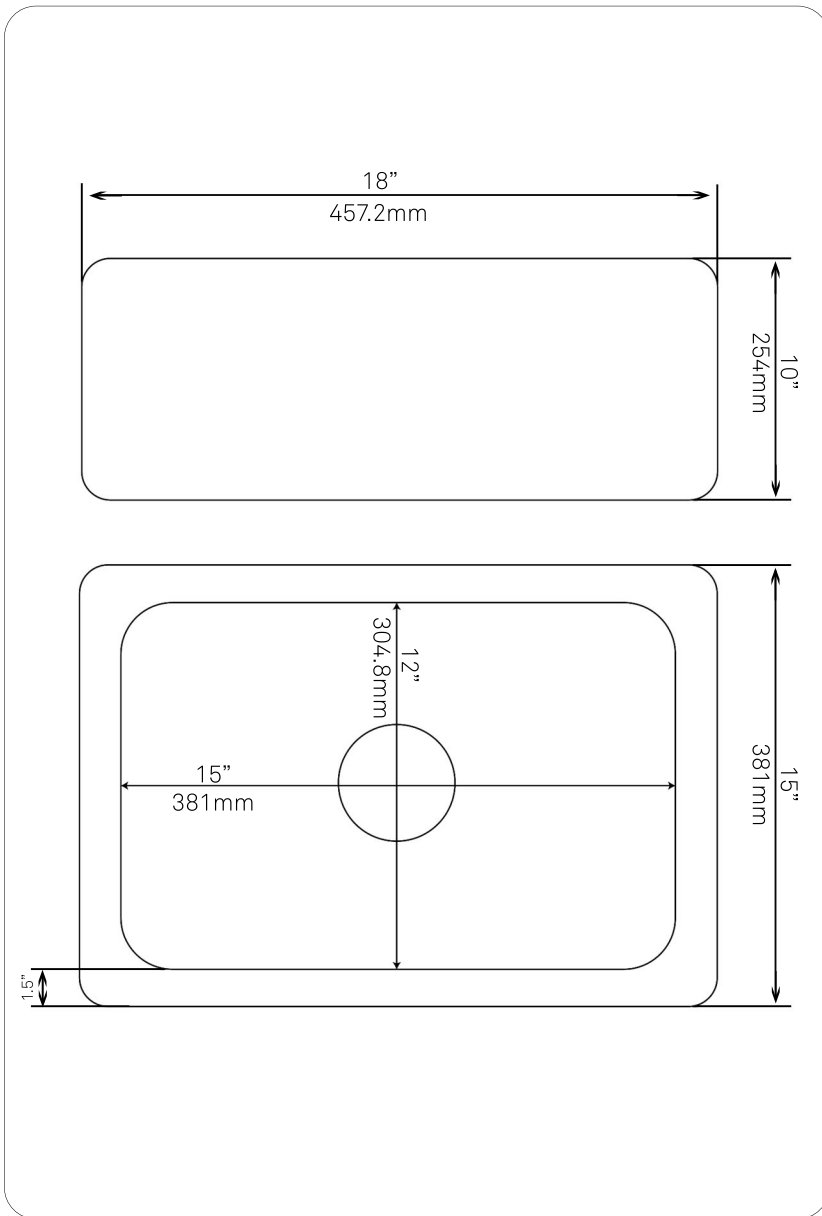




**NKS-18SBPAN**  
**18-inch Single Bowl Bar Sink,**  
**Black Granite w/ Polished Apron**

Requested By: \_\_\_\_\_

Specific Features: \_\_\_\_\_



**STANDARD SPECIFICATIONS:**

- Rectangle black granite bar/prep sink
- Polished black interior and exterior
- Artisan hand crafted natural stone
- Undermount or farmhouse installation
- Approximate dimensions due to handmade craftsmanship
- Outside dimension: 18 x 15 x 10-inches
- Inside Dimensions: 15 x 12 x 8.5-inches
- 1.5-inch thick side walls
- 3.5-inch drain opening
- Standard U.S. plumbing connection
- *This sink weighs 145 pounds, be sure to re-enforce*

**WARRANTY:**

- Limited lifetime warranty
- See [www.NovattoInc.com](http://www.NovattoInc.com) for details

**COORDINATING ACCESSORIES:**

- Glacier Ice Restoration and Sealer kit

**NOTES**

Novatto reserves the right (1) to make changes in specifications and materials, and (2) to change or discontinue models, both without notice or obligation. Dimensions are for reference only, see [www.NovattoInc.com](http://www.NovattoInc.com) for finish options and product availability.

Novatto Inc  
 TOLL FREE 844.404.4242  
[www.NovattoInc.com](http://www.NovattoInc.com)